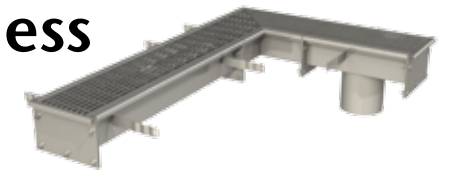




# PORTFOLIO

## ACO Stainless



### System 100

#### Krispy Kreme Store, Penrith, NSW

Originating from the USA, there are now more than 22 Krispy Kreme doughnut franchises operating around Australia. The first Australian franchise opened in 2004, next to the Penrith Panther's football club at Penrith. The doughnuts are made fresh daily on the premises. The Krispy Kreme franchisees adhere to strict company procedures regarding the hygiene of their equipment and premises.

#### Project Design Brief

The Krispy Kreme processing and preparation areas are regularly washed with hot water, sterilising agents and cleaning chemicals to ensure that all the machinery and all the surfaces are kept hygienically clean. A functional, cost effective and durable drainage system, capable of withstanding the constant cleaning regime was required.

#### ACO's Solution

- System 100 stainless steel channel with solid edge profile
- Composite Slotted **Heelsafe**® *Anti-Slip* grates

#### Benefits

- The stainless steel channels have a 1% built-in fall enabling efficient drainage to outlets on level floors
- Composite Slotted **Heelsafe**® *Anti-Slip* grates are a cost effective alternative to stainless steel grates and are durable enough to withstand chemicals
- The channel's solid edge profile provides protection to the drain from heavy trolleys carrying ingredients in the production area



PFW201573

For more product information visit: [www.acoaus.com.au](http://www.acoaus.com.au) | [www.acostainless.com.au](http://www.acostainless.com.au)