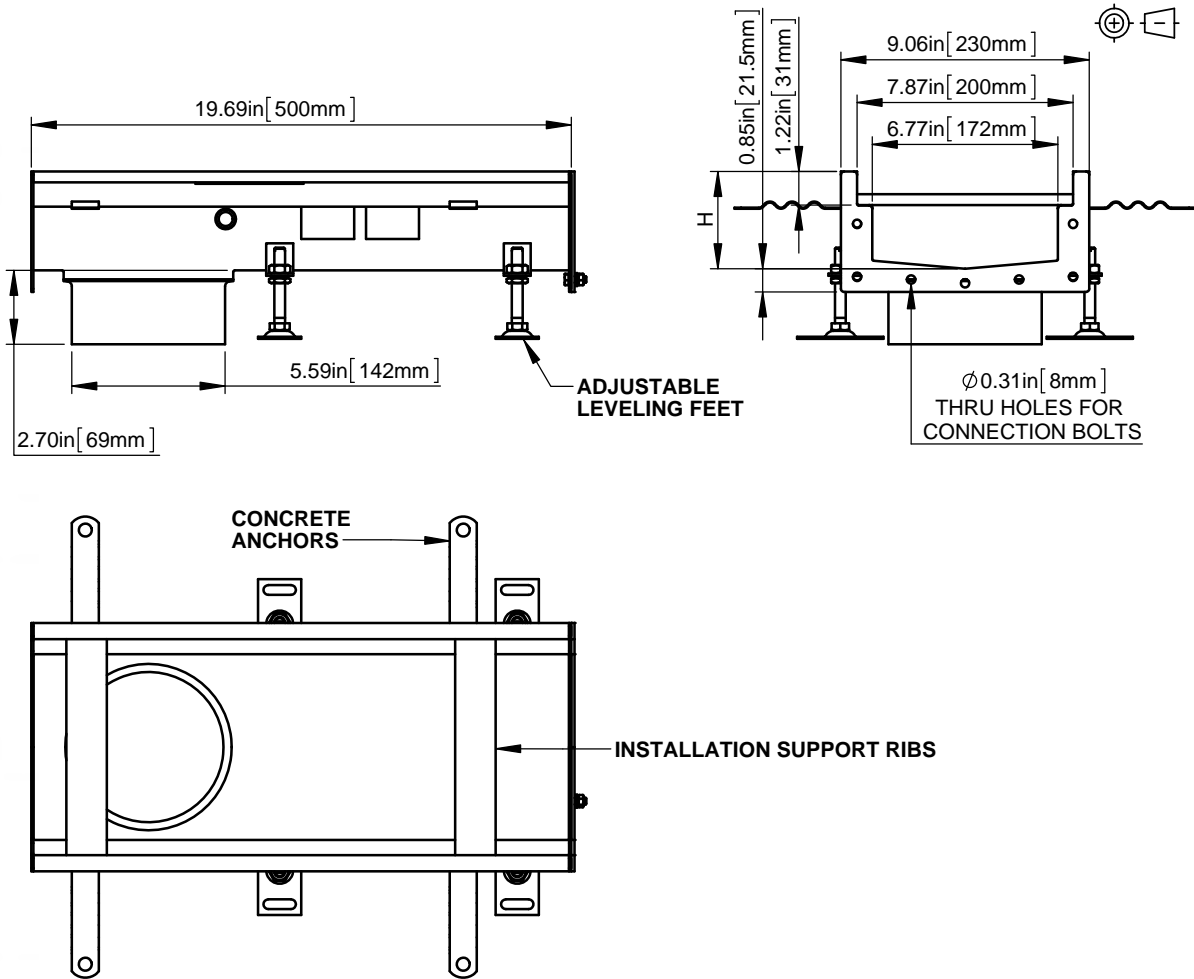


ACO Building Drainage
ACO MODULAR 200 END OUTLETS, D142

ACO Specification Information



Part No	Material	H (in)	L (in)	Weight (lbs)
409900	AISI 304	2.36	19.69	7.05
409901	AISI 304	2.76	19.69	7.94
409902	AISI 304	3.15	19.69	8.38
409903	AISI 304	3.54	19.69	8.60
409904	AISI 304	3.94	19.69	9.04
409905	AISI 304	4.33	19.69	9.26
409906	AISI 304	4.72	19.69	9.48
409907	AISI 304	5.51	19.69	10.14

Part No	Material	H (in)	L (in)	Weight (lbs)
409908	AISI 316L	2.36	19.69	7.05
409909	AISI 316L	2.76	19.69	7.94
409910	AISI 316L	3.15	19.69	8.38
409911	AISI 316L	3.54	19.69	8.60
409912	AISI 316L	3.94	19.69	9.04
409913	AISI 316L	4.33	19.69	9.26
409914	AISI 316L	4.72	19.69	9.48
409915	AISI 316L	5.51	19.69	10.14

Specification Clause

ACO Modular 200 end outlets. Overall height varies, see tables. Used with ACO 10" Floor Drains. Made from 16ga (1.5mm) AISI 304 or AISI 316L, pickle passivated finish. All channels provided with NBR seal and connection bolts on one side. Multiple grate options available.

ACO recommends checking local plumbing codes prior to installation.

ACO Polymer Products, Inc.

Northeast Sales Office
 9470 Pinecone Dr.
 Mentor, OH 44060
 Tel: (440) 639-7230
 Toll Free: (800) 543-4764
 Fax: (440) 639-7235

West Sales Office
 825 W Beechcraft St.
 Casa Grande, AZ 85122
 Tel: (520) 421-9988
 Toll Free: (866) 809-4506
 Fax: (520) 421-9899

Southeast Sales Office
 4211 Pleasant Road
 Fort Mill, SC 29708
 Tel: (800) 543-4764
 Toll Free: (800) 543-4764
 Fax: (803) 802-1063

Follow us on



Electronic Contact:
 info@acousa.com
 www.acobuildingdrainage.us



May 2016 ACO Polymer Products, Inc. This information is believed to be accurate but it is not guaranteed to be so. We cannot assume liability for results that buyer obtains with our products since conditions of use are beyond the control of the company. It is the customer's responsibility to evaluate suitability and safety of product for his own use. ACO Polymer Products, Inc. reserves the right to change the product and specifications without notice.