

ACO Modular Open and Slot Channels

Installation manual



ACO Modular Open and Slot Channels

Modular channels are parts and pieces, that can be assembled to provide trench drain layouts - refer to catalog for product details.

Examples:

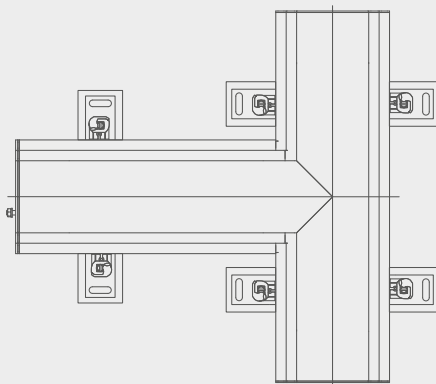
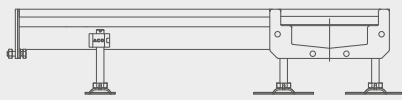
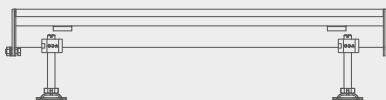
ACO Modular 125/200



Straight unit



Tee unit





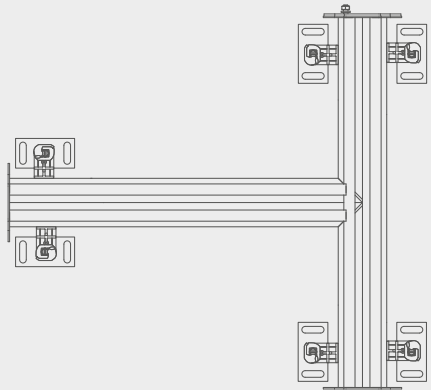
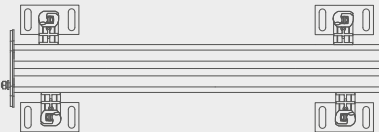
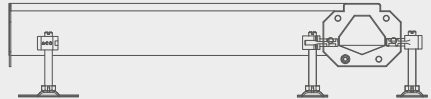
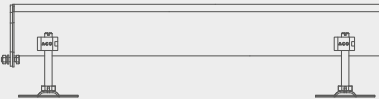
ACO Slot 20



Straight unit



Tee unit



ACO Modular Open and Slot Channels

Assembly of leveling feet for installation



Attach red plastic clips.



Use rubber/plastic hammer to securely fix clip in place.



Open clip.



Insert leveling feet through plastic clip.



Leveling feet slide through clip to set channel at approximate height and level required.



Close and snap clip to hold feet in place - fine tuning can be done later with screwdriver.

Installation of modular channel into floor drain body



Installation usually starts at the outlet - that is a fixed position. The outlet channels can connect directly to a pipe system or to an ACO adjustable height floor drain body (see separate installation manual for ACO Floor Drain Lower Body)



Modular open channels are supplied with spacing bars in place - **DO NOT REMOVE SPACER BARS**. They provide rigidity and protect channel shape during transportation, site handling and installation. They prevent closure of channel edge during concrete pour, preventing the grate from fitting.

Bars should be removed immediately prior to grate installation. Removal is done by sharp horizontal blow with a rubber mallet.

Never remove spacers from slot channels.



Modular channels should be encased in concrete - specific channel and flooring finish details are available to download at www.acobuildingdrainage.com.

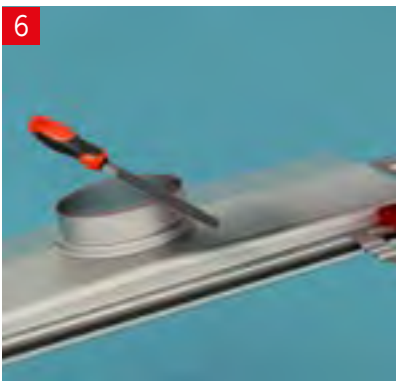
ACO Modular Open and Slot Channels



Test install unit into the floor drain to check height and spigot length/position. If spigot is too long, it can be trimmed to fit.



If needed, cut spigot to length using stainless steel blade to prevent contamination of the stainless material with steel particles that can cause rust and attract bacteria.



Smooth cut edges using stainless steel file to prevent contamination of the stainless material with steel particles that can cause rust and attract bacteria.

Connecting modular channel units together



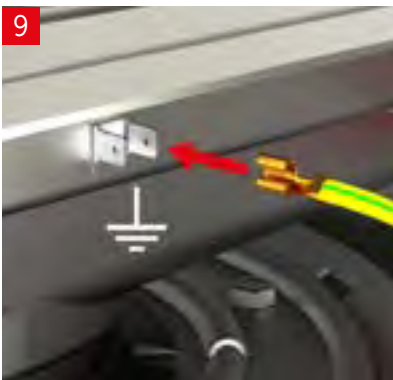
Push-fit outlet channel into the friction ring in the floor drain base and ensure level and at correct height.

Adjust leveling feet as required.



If not using waterproof membrane, feet can be screwed into position.

If using a waterproof membrane, set feet in concrete, or weigh channel down, to hold channel securely in position during concrete pour.



Attach grounding wire to earthing point on the channel, if required.

ACO Modular Open and Slot Channels

Installing modular channels in floor slab



To connect channels together, ensure rubber gasket is positioned between channels to seal each joint.



Use provided hardware to bolt channels together finger tight.



Check alignment, level and position of channels before fully tightening joints. Tighten to no more than 4.5 ft-lb (6Nm).



Floor finishing

13



Height and level can be adjusted before concrete pour using screwdriver in the top of leveling foot.

14



If threaded leveling legs interfere with intended floor finish, they need to be trimmed.

Cover channel system while cutting to protect from contamination from steel particles and potential future corrosion problems.

15



Once all channels are set in position, attach end caps.

Pour concrete carefully to avoid voids beneath channel, minimize concrete splash into channels and prevent dislodging position of channels.

Immediately clean concrete splash from channel edges and interior.

ACO Modular Open and Slot Channels

16



Finish concrete surface to required level.

Leave correct height if further floor covering required.

17



Install floor finish - ensure 1/8" (3mm) above drain to ensure positive drainage.

Clean channel edges and interior.

Once installation of the channel is complete, and concrete surround and floor surfaces have cured,

Open channels only - spacer bars can now be removed.

18



Once grates are installed installation is complete.

For locking grates see page 11.

Ensure regular maintenance and cleaning is performed to ensure long service life.

Locking grates by special order only.

Locking grates are held in position using M8 50mm long bolts and an M8 allen key.



Locking method varies depending upon depth and type of channel.

**Modular 125: 50-65mm depth**

Due to depth restrictions, grates bolt into a nut in bottom of channel.

Position grate into channel such that bolts align over receiving nuts in base of channel.

DO NOT OVERTIGHTEN**Modular 125: >65mm depth**

Insert bolt into grate and loosely screw in locking bar. Position lower side of locking bar in front of higher side when turning clockwise.

Place grate in channel and tighten bolts - this will turn locking bar within channel and lock it onto pins within channel.

Fully tighten grate into channel and test to ensure grate does not move.

**Modular 125 - outlet channels**

Place grate in channel and insert locking bar under pins within sides of channel. Loosely tighten locking bar by hand so it is held in position to be tightened further.

Tighten bolts so locking bar pulls up against pins. This will secure grate in place.

Fully tighten grate into channel and test to ensure grate does not move.

Other Installation manuals:

ACO Floor Drain - Fixed Height



ACO Floor Drain - Adjustable Height



Floor Drain Top and Floor Trough



ACO Polymer Products, Inc.

West Sales Office

825 W. Beechcraft St.
Casa Grande, AZ 85122
Tel: (520) 421-9988
Toll Free: (888) 490-9552
Fax: (520) 421-9899

Northeast Sales Office

9470 Pinecone Drive
Mentor, OH 44060
Tel: (440) 639-7230
Toll Free: (800) 543-4764
Fax: (440) 639-7235

Southeast Sales Office

4211 Pleasant Road
Fort Mill, SC 29708
Toll Free: (800) 543-4764
Fax: (803) 802-1063

Electronic Contact:

info@acousa.com
www.acobuildingdrainage.com

Follow us on:



© July 2017 ACO Polymer Products, Inc.

All reasonable care has been taken in compiling the information in this document. All recommendations and suggestions on the use of ACO products are made without guarantee since the conditions of use are beyond the control of the Company. It is the customer's responsibility to ensure that each product is fit for its intended purpose and that the actual conditions of use are suitable. ACO Polymer Products, Inc. reserves the right to change products and specifications without notice.

Re-order Part # BDO??