

Introduction

ACO Hygienic Trench Drain product range

The ACO Hygienic Trench Drain range includes drains for all common applications and typical floor types. The ACO Hygienic Trench Drain portfolio is designed with an emphasis on hygienic design requirements. Selecting a drain from the range is easy.

The unique variability of the whole range makes it easy to choose a drain that suits a customer's specific needs. Channel length, depth and outlet position are just a few of the parameters which can be specified.

ACO Hygienic Trench Drain ordering

The dimensions of the ACO Hygienic Trench Drain can be easily specified to meet exact project requirements. To specify a drain, please use the Specification template (see page 74) which will help you to identify the information you need, or contact our

Sales/Technical department. ACO Trench Drains with fixed dimensions are also available. These dimensions are a selection of most frequently sold ACO Trench Drains. Please see page 60 where you can find an overview.

ACO Hygienic Trench Drain customization

ACO offers you full customization of your drainage solution. All ACO trench drains can be designed with:

- Custom outlet position
- Custom depth
- Custom slope
- Custom channel width
- L-shape and T-shape layout
- Custom side inlets

To review customized ACO Trench Drain solutions, please contact our Sales/Technical department.

Grate Loading Overview

Grate		ACO Recommended Load Classification				
		Light duty	Medium duty	Heavy duty	Extra heavy duty	Special duty
Hygienic Floor Trough	Hygienic Cast				X	
	Hygienic Ladder	X	X			
	Mesh	X				
Modular 125	Mesh	X				
	Hygienic Ladder			X		
	Heelsafe		X			
	Quadrato	X				
	Plastic	X				
	Multi-slot 5		X			
Modular 200	Mesh	X				
	Hygienic Ladder			X		
	Multi-slot 5		X			

Hygienic design

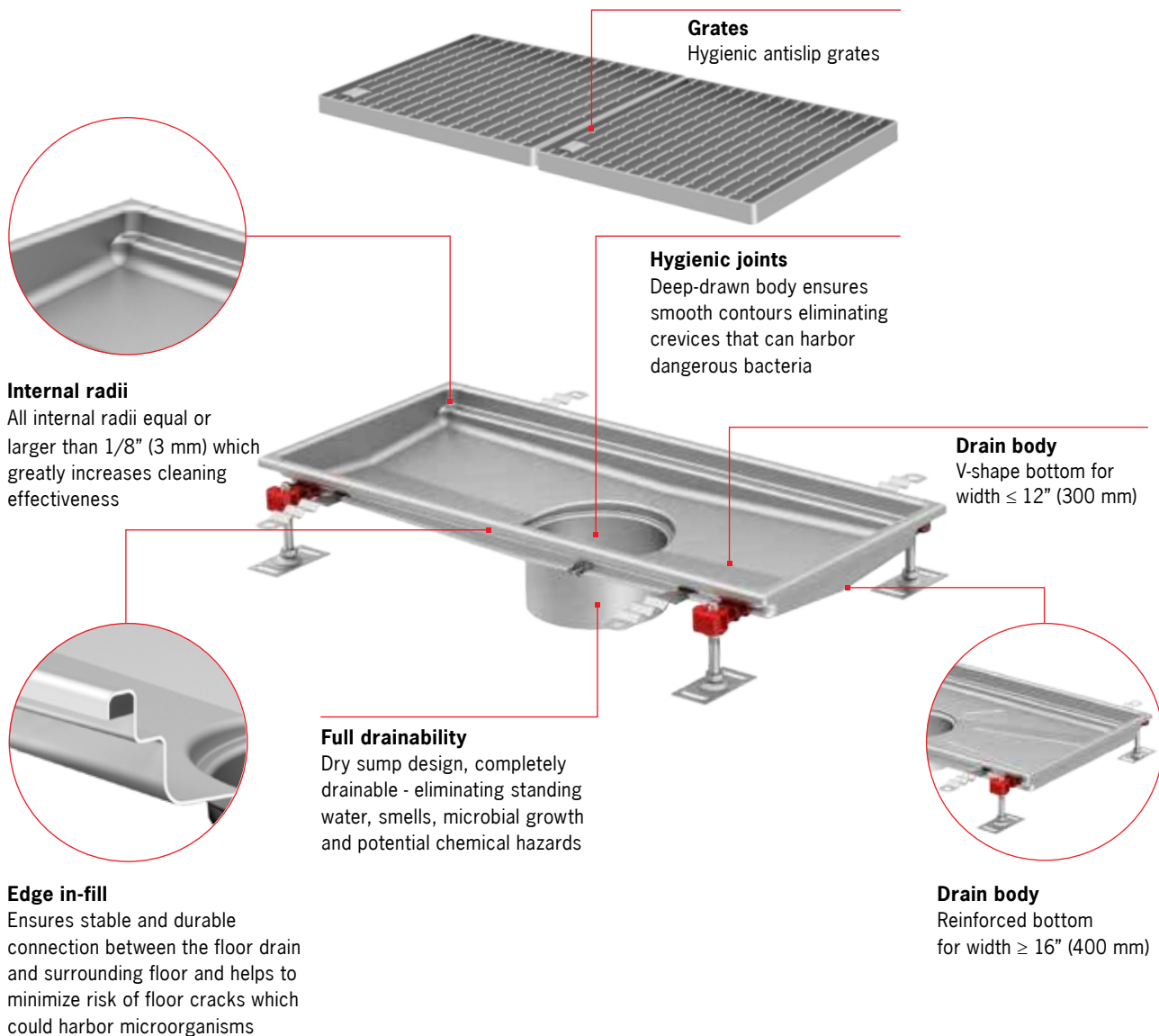
ACO offers sustainable, integrated drainage systems which are designed to protect your business, the environment and ultimately, public health. Our aim is to constantly improve every aspect of safety, hygiene and functional performance.

We believe that our systems and services are truly unique, delivering unparalleled benefits to everyone involved in project delivery or subsequent operation.

ACO hygienic systems fulfill stringent hygienic requirements helping to prevent harmful bacterial contamination. We apply the relevant hygienic design principles reserved for food contact surfaces (EHEDG documents No. 8, 13, 44 and NSF/ANSI 3-A 14159-1-2014) to the channel designs.

ACO Hygienic Trench Drain features:

- Fully drainable
- Internal radii equal or larger than 1/8 inch (3 mm)
- Hygienic joints
- Edge in-fill
- Stainless steel grade min. AISI 304
- Fully pickle passivated



Grates
Hygienic antislip grates

Hygienic joints
Deep-drawn body ensures smooth contours eliminating crevices that can harbor dangerous bacteria

Internal radii
All internal radii equal or larger than 1/8" (3 mm) which greatly increases cleaning effectiveness

Drain body
V-shape bottom for width ≤ 12" (300 mm)

Full drainability
Dry sump design, completely drainable - eliminating standing water, smells, microbial growth and potential chemical hazards

Edge in-fill
Ensures stable and durable connection between the floor drain and surrounding floor and helps to minimize risk of floor cracks which could harbor microorganisms

Drain body
Reinforced bottom for width ≥ 16" (400 mm)

Fixed-height, horizontal outlet solution *(available as a one-piece solution)*



ACO Hygienic Floor Trough

Adjustable, vertical outlet solution *(standard configuration)*



ACO Hygienic Floor Trough



ACO Hygienic Floor Drain

ACO Hygienic Floor Trough - Standard products

Product information

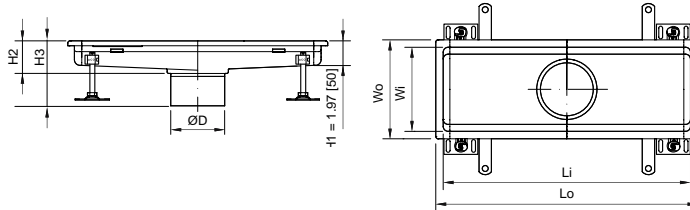
The dimensions of the ACO Hygienic Floor Trough for concrete, tile and resin floors can be easily specified to meet exact project requirements or easily chosen from predefined fixed dimensions.

- Hygienic design following EN 1672, EN ISO 14159, EHEDG document No. 8, 13, 44 and NSF/ANSI 3-A 14159-1-2014
- Available in AISI 304 or AISI 316L grades of stainless steel
- Fully pickle passivated
- Minimum longitudinal slope 1 %
- Minimum cross sectional slope 5°
- V-shape bottom for width < 11.81"
- Reinforced bottom for width over 11.81"
- Rubber edge infill
- Rounded corners 1/8" radii or larger
- Easy and secure adjustable connection with Floor Drain
- Hygienic grates with slip resistance
- Adjustable leveling feet 2.36" - 4.33"
- Installation anchors for securing into concrete
- 4.92" diameter outlet connects to ACO 8" Hygienic Floor Drain body
- 5.59" diameter outlet connects to ACO 10" Hygienic Floor Drain body
- 7.87" diameter outlet connects to ACO 12" Hygienic Floor Drain body



Items shown with the NSF Mark have been tested and Certified by NSF International.

Product data

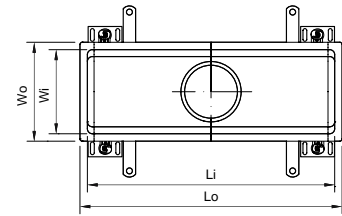
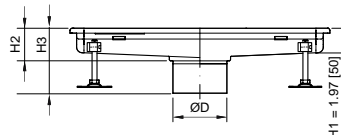


Channel dimensions							Floor Drain	Material	Part #
Wo in [mm]	Wi in [mm]	Lo in [mm]	Li in [mm]	H2 in [mm]	H3 in [mm]	ØD in [mm]			
7.87 [200]	6.69 [170]	20.87 [530]	19.69 [500]	2.36 [60]	4.25 [108]	4.92 [125]	ACO 8" Hygienic Floor Drain	AISI 304	416584
								AISI 316L	416602
		32.68 [830]	31.50 [800]					AISI 304	416585
								AISI 316L	416603
		40.55 [1030]	39.37 [1000]					AISI 304	416586
								AISI 316L	416604
		48.43 [1230]	47.24 [1200]					AISI 304	416587
								AISI 316L	416605
		60.24 [1530]	59.06 [1500]	AISI 304	416588				
				AISI 316L	416606				
		79.92 [2030]	78.74 [2000]	AISI 304	416589				
				AISI 316L	416607				

ACO Hygienic Floor Trough

Standard products

Product data

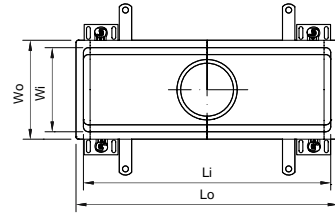
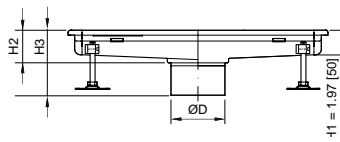


Channel dimensions							Floor Drain	Material	Part #				
Wo in [mm]	Wi in [mm]	Lo in [mm]	Li in [mm]	H2 in [mm]	H3 in [mm]	ØD in [mm]							
7.87 [200]	6.69 [170]	20.87 [530]	19.69 [500]	2.36 [60]	4.8 [122]	5.59 [142]	ACO 10" Hygienic Floor Drain	AISI 304	416590				
								AISI 316L	416608				
		32.68 [830]	31.50 [800]					AISI 304	416591				
								AISI 316L	416609				
		40.55 [1030]	39.37 [1000]					AISI 304	416592				
								AISI 316L	416610				
		48.43 [1230]	47.24 [1200]					AISI 304	416593				
								AISI 316L	416611				
		60.24 [1530]	59.06 [1500]				AISI 304	416594					
							AISI 316L	416612					
		79.92 [2030]	78.74 [2000]				AISI 304	416595					
							AISI 316L	416613					
11.81 [300]	10.63 [270]	12.99 [330]	11.81 [300]	2.36 [60]	4.52 [115]	5.59 [142]	ACO 10" Hygienic Floor Drain	AISI 304	416614				
								AISI 316L	416628				
		24.80 [630]	23.62 [600]					AISI 304	416615				
								AISI 316L	416629				
		40.55 [1030]	39.37 [1000]					AISI 304	416616				
								AISI 316L	416630				
		60.24 [1530]	59.06 [1500]		4.72 [120]			AISI 304	416617				
								AISI 316L	416631				
		79.92 [2030]	78.74 [2000]					AISI 304	416618				
								AISI 316L	416632				
		119.29 [3030]	118.11 [3000]	2.76 [70]	5.11 [130]			AISI 304	416619				
								AISI 316L	416633				
		158.66 [4030]	157.48 [4000]	3.15 [80]	5.51 [140]			AISI 304	416620				
								AISI 316L	416634				
		12.99 [330]	11.81 [300]	2.17 [55]	4.52 [115]			2.36 [60]	4.72 [120]	7.87 [200]	ACO 12" Hygienic Floor Drain	AISI 304	416621
												AISI 316L	416635
24.80 [630]	23.62 [600]			AISI 304	416622								
				AISI 316L	416636								
40.55 [1030]	39.37 [1000]			AISI 304	416623								
				AISI 316L	416637								
60.24 [1530]	59.06 [1500]			AISI 304	416624								
				AISI 316L	416638								
79.92 [2030]	78.74 [2000]			AISI 304	416625								
				AISI 316L	416639								
119.29 [3030]	118.11 [3000]	2.76 [70]	5.11 [130]	AISI 304	416626								
				AISI 316L	416640								
158.66 [4030]	157.48 [4000]	3.15 [80]	5.51 [140]	AISI 304	416627								
				AISI 316L	416641								

* 4.92" diameter outlet connects to ACO 8" Hygienic Floor Drain body. 5.59" diameter outlet connects to ACO 10" Hygienic Floor Drain body. 7.87" diameter outlet connects to ACO 12" Hygienic Floor Drain body.

www.acobuildingdrainage.com

Product data



Wo in [mm]	Wi in [mm]	Channel dimensions				H2 in [mm]	H3 in [mm]	ØD in [mm]	Floor Drain	Material	Part #
		Lo in [mm]	Li in [mm]								
15.75 [400]	14.57 [370]	16.93 [430]	15.75 [400]	2.36 [60]	4.84 [123]	5.59 [142]	ACO 10" Hygienic Floor Drain	AISI 304	416642		
								AISI 316L	416648		
		24.80 [630]	23.62 [600]					AISI 304	416643		
								AISI 316L	416649		
		32.68 [830]	31.50 [800]					AISI 304	416644		
								AISI 316L	416650		
		16.93 [430]	15.75 [400]					ACO 12" Hygienic Floor Drain	AISI 304	416645	
									AISI 316L	416651	
24.80 [630]	23.62 [600]	AISI 304	416646								
		AISI 316L	416652								
		32.68 [830]	31.50 [800]	AISI 304	416647						
				AISI 316L	416653						
19.69 [500]	18.50 [470]	20.87 [530]	19.69 [500]	2.56 [65]	5.00 [127]	5.59 [142]	ACO 10" Hygienic Floor Drain	AISI 304	416654		
								AISI 316L	416660		
		32.68 [830]	31.50 [800]		4.84 [123]			AISI 304	416655		
								AISI 316L	416661		
		40.55 [1030]	39.37 [1000]					AISI 304	416656		
								AISI 316L	416662		
		20.87 [530]	19.69 [500]		ACO 12" Hygienic Floor Drain			AISI 304	416657		
								AISI 316L	416663		
32.68 [830]	31.50 [800]	4.88 [124]	AISI 304	416658							
			AISI 316L	416664							
		40.55 [1030]	39.37 [1000]	AISI 304	416659						
				AISI 316L	416665						
23.62 [600]	22.44 [570]	24.80 [630]	23.62 [600]	2.76 [70]	5.11 [130]	7.87 [200]	ACO 12" Hygienic Floor Drain	AISI 304	416666		
								AISI 316L	416669		
		36.61 [930]	35.43 [900]		4.88 [124]			AISI 304	416667		
								AISI 316L	416670		
		48.43 [1230]	47.24 [1200]		4.92 [125]		AISI 304	416668			
							AISI 316L	416671			
31.50 [800]		32.68 [830]	31.50 [800]	3.15 [80]	5.23 [133]		AISI 304	416672			
							AISI 316L	416673			



Items shown with the NSF Mark have been tested and Certified by NSF International.

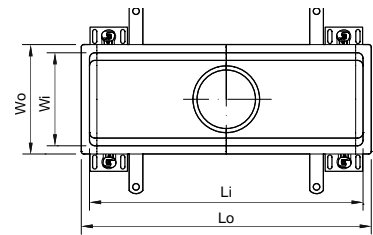
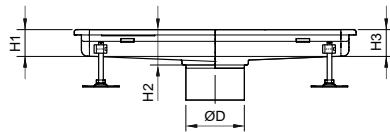
ACO Hygienic Floor Trough - Semi-standard products

Product information

The dimensions of the ACO Hygienic Floor Trough for concrete, tile and resin floors can be easily specified to meet exact project requirements.

- Hygienic design following EN 1672, EN ISO 14159, EHEDG document No. 8, 13, 44 and NSF/ANSI 3-A 14159-1-2014
- Available in AISI 304 or AISI 316L grades of stainless steel
- Fully pickle passivated
- Minimum longitudinal slope 1 %
- Minimum cross sectional slope 5°
- V-shape bottom for width < 11.81"
- Reinforced bottom for width over 11.81"
- Rubber edge infill
- Rounded corners 1/8" radii or larger
- Easy and secure adjustable connection with floor drain
- Hygienic grates with slip resistance
- Adjustable leveling feet 2.36" - 4.33"
- Installation anchors for securing into concrete

Product data



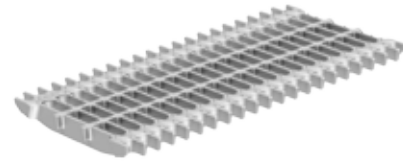
External (overall) width Wo in [mm]	Internal (grate) width Wi in [mm]	Length of channel Lo	Height at outlet of channel H2 in [mm]	Height at end of channel H1 and H3 in [mm]
7.87 [200]	6.69 [170]	Variable	2.36 [60] - 7.87 [200]	1.97 [50] 3.15 [80] 4.33 [110] 5.51 [140]
11.81 [300]	10.63 [270]			
15.75 [400]	14.57 [370]			
19.69 [500]	18.50 [470]			
23.62 [600]	22.44 [570]			
31.50 [800]	30.31 [770]			

* Long channels over 3m are manufactured in sections for shipping and handling.

Hygienic Cast Grate

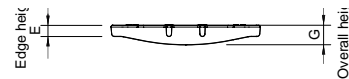
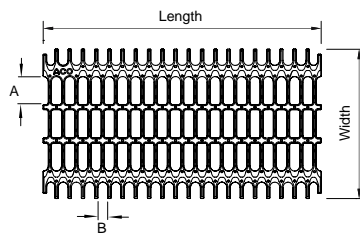
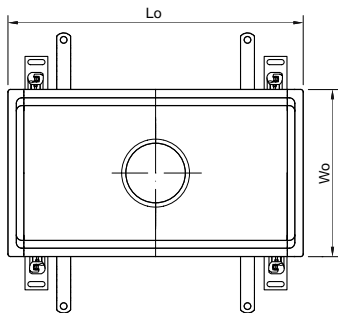
Product information

- Hygienic design following EN 1672, EN ISO 14159 and EHEDG document No. 8, 13, 44 and NSF/ANSI 3-A 14159-1-2014
- ACO Hygienic Cast Grate with slip resistant finish
- Frameless design for optimum drainability and cleanability
- Surface electropolished
- Easy to clean grates



Items shown with the NSF Mark have been tested and Certified by NSF International.

Product data - Load class: Heavy Duty

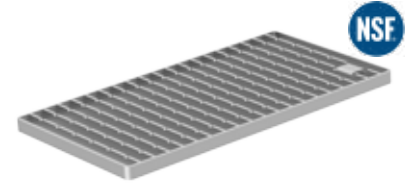


Channel dimension		Grate dimension					Material	Part #	# of Grates to fill channel					
Wo in [mm]	Lo in [mm]	Edge ht E in [mm]	Overall ht G in [mm]	Width [in]	Length in [mm]	Slot size in [mm]								
						A	B							
7.87 [200]	20.87 [530]	0.79 [20]	1.18 [30]	6.61 [168]	19.65 [499]	1.57 [40]	0.67 [17]	AISI 304	416947	1				
	32.68 [830]				15.67 [398]				416948	2				
	40.55 [1030]				19.65 [499]				416947	2				
	48.43 [1230]				15.67 [398]				416948	3				
	60.24 [1530]				19.65 [499]				416947	3				
	79.92 [2030]								416947	4				
11.81 [300]	12.99 [330]					10.55 [268]	11.73 [298]		1.57 [40]	0.67 [17]		416946	1	
	24.80 [630]										416946	2		
	40.55 [1030]										416945	2		
	60.24 [1530]										416945	3		
	79.92 [2030]						19.65 [499]				1.99 [50.5]	0.71 [18]	416945	4
	119.29 [3030]										416945	6		
	158.66 [4030]						416945	8						

Hygienic Ladder Grate

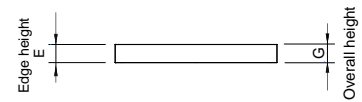
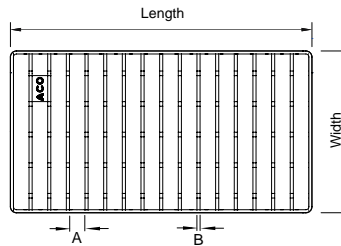
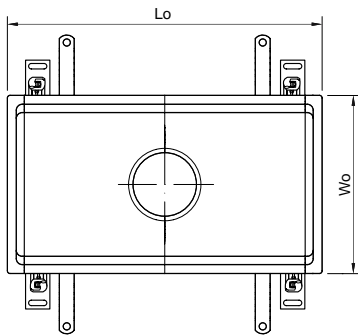
Product information

- Hygienic design following EN 1672, EN ISO 14159 and EHEDG document No. 8, 13, 44 and NSF/ANSI 3-A 14159-1-2014
- ACO Hygienic Ladder Grate with slip resistant finish
- Frameless design for optimum drainability and cleanability
- Surface electropolished
- Easy to clean grates



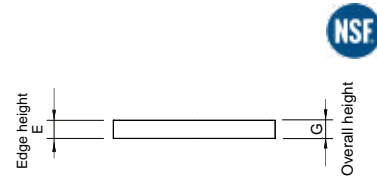
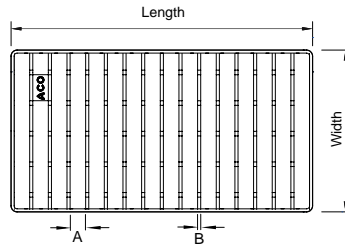
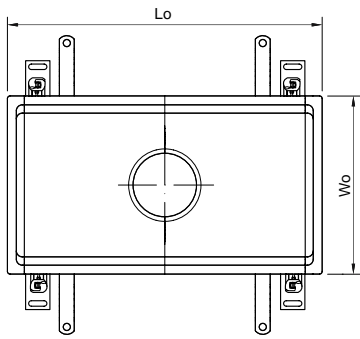
Items shown with the NSF Mark have been tested and Certified by NSF International.

Product data - Load class: Light Duty



Channel dimension		Grate dimension						Material	Part #	# of Grates to fill channel
Wo	Lo	Edge ht	Overall ht	Width	Length	Slot size				
in [mm]	in [mm]	E in [mm]	G in [mm]	in [mm]	in [mm]	A	B			
7.87 [200]	20.87 [530]	0.79 [20]	0.79 [20]	6.61 [168]	19.65 [499]	0.79 [20]	0.16 [4]	AISI 304	416802	1
								AISI 316L	416803	
	32.68 [830]				15.67 [398]			AISI 304	416808	2
								AISI 316L	416809	
	40.55 [1030]				19.65 [499]			AISI 304	416802	2
								AISI 316L	416803	
	48.43 [1230]				15.67 [398]			AISI 304	416808	3
								AISI 316L	416809	
60.24 [1530]	19.65 [499]	AISI 304	416802	3						
		AISI 316L	416803							
79.92 [2030]	19.65 [499]	AISI 304	416802	4						
		AISI 316L	416803							

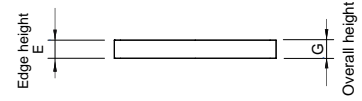
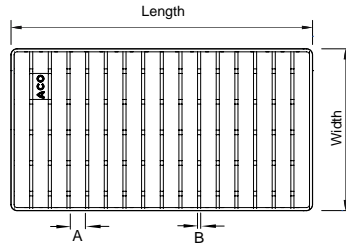
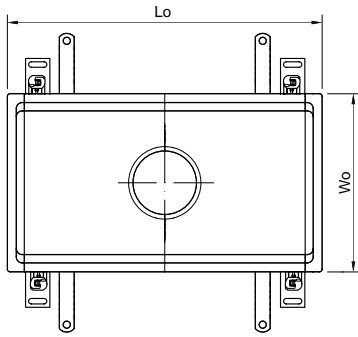
Product data - Load class: Light duty



Channel dimension		Grate dimension					Material	Part #	# of Grates to fill channel				
Wo in [mm]	Lo in [mm]	Edge ht E in [mm]	Overall ht G in [mm]	Width in [mm]	Length in [mm]	Slot size in [mm]							
						A	B						
11.81 [300]	12.99 [330]	0.79 [20]	0.79 [20]	10.55 [268]	11.73 [298]	0.79 [20]	0.16 [4]	AISI 304	416812	1			
	24.80 [630]							AISI 316L	416813				
	40.55 [1030]							AISI 304	416812	2			
	60.24 [1530]							AISI 316L	416813				
	79.92 [2030]							AISI 304	416814	3			
	119.29 [3030]							AISI 316L	416815				
	158.66 [4030]			AISI 304	416814	4							
				AISI 316L	416815								
	15.75 [400]			16.93 [430]	1.18 [30]	1.18 [30]	14.49 [368]	15.67 [398]	0.79 [20]	0.16 [4]	AISI 304	416820	1
				24.80 [630]				23.54 [598]			AISI 316L	416821	
				32.68 [830]				15.67 [398]			AISI 304	416822	1
				20.87 [530]			19.65 [499]	AISI 316L	416823				
32.68 [830]		15.67 [398]	AISI 304	416820			2						
40.55 [1030]		19.65 [499]	AISI 316L	416821									
19.69 [500]	20.87 [530]	1.18 [30]	1.18 [30]	18.43 [468]	19.65 [499]	0.79 [20]	0.2 [5]	AISI 304	416828	1			
	32.68 [830]				15.67 [398]			AISI 316L	416829				
	40.55 [1030]			19.65 [499]	AISI 304	416830	2						
				19.65 [499]	AISI 316L	416831							
23.62 [600]	24.80 [630]	1.18 [30]	1.18 [30]	22.36 [568]	11.73 [298]	0.79 [20]	0.24 [6]	AISI 304	416838	2			
	36.61 [930]				11.73 [298]			AISI 316L	416839				
	48.43 [1230]			11.73 [298]	AISI 304	416838	3						
				11.73 [298]	AISI 316L	416839							
31.50 [800]	32.68 [830]	1.18 [30]	1.18 [30]	30.24 [768]	15.67 [398]	0.79 [20]	0.24 [6]	AISI 304	416842	2			
					15.67 [398]			AISI 316L	416843				

ACO Hygienic Floor Trough Hygienic Ladder Grate

Product data - Load class: Medium Duty



ACO Hygienic Trench Drain Grates

Channel dimension		Grate dimension					Material	Part #	# of Grates to fill channel	
Wo in [mm]	Lo in [mm]	Edge ht E in [mm]	Overall ht G in [mm]	Width in [mm]	Length in [mm]	Slot size in [mm]				
						A	B			
7.87 [200]	20.87 [530]	0.79 [20]	0.79 [20]	6.61 [168]	19.65 [499]	0.79 [20]	0.20 [5]	AISI 304	416804	1
								AISI 316L	416805	
	32.68 [830]							AISI 304	416810	2
								AISI 316L	416811	
	40.55 [1030]							AISI 304	416804	2
								AISI 316L	416805	
	48.43 [1230]							AISI 304	416810	3
								AISI 316L	416811	
60.24 [1530]	AISI 304	416804	3							
	AISI 316L	416805								
79.92 [2030]	AISI 304	416804	4							
	AISI 316L	416805								
11.81 [300]	12.99 [330]	0.79 [20]	1.18 [30]	10.55 [268]	11.73 [298]	0.79 [20]	0.20 [5]	AISI 304	416816	1
								AISI 316L	416817	
	24.80 [630]							AISI 304	416816	2
								AISI 316L	416817	
	40.55 [1030]							AISI 304	416818	2
								AISI 316L	416819	
	60.24 [1530]							AISI 304	416818	3
								AISI 316L	416819	
79.92 [2030]	AISI 304	416818	4							
	AISI 316L	416819								
119.29 [3030]	AISI 304	416818	6							
	AISI 316L	416819								
158.66 [4030]	AISI 304	416818	8							
	AISI 316L	416819								



Items shown with the NSF Mark have been tested and Certified by NSF International.

www.acobuildingdrainage.com



Product data - Load class: Medium Duty

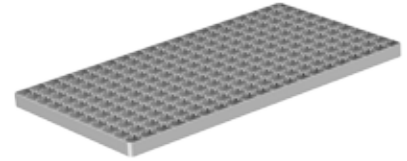


Channel dimension		Grate dimension						Material	Part #	# of Grates to fill channel
Wo in [mm]	Lo in [mm]	Edge ht E in [mm]	Overall ht G in [mm]	Width in [mm]	Length in [mm]	Slot size in [mm]				
15.74 [400]	16.93 [430]	1.18 [30]	1.18 [30]	14.49 [368]	15.67 [398]	0.79 [20]	0.20 [5]	AISI 304	416824	1
								AISI 316L	416825	
	24.80 [630]				23.54 [598]			AISI 304	416826	1
								AISI 316L	416827	
	32.68 [830]				15.67 [398]			AISI 304	416824	2
								AISI 316L	416825	
19.69 [500]	20.87 [530]	1.18 [30]	1.18 [30]	18.42 [468]	19.65 [499]	0.79 [20]	0.24 [6]	AISI 304	416832	1
								AISI 316L	416833	
	32.68 [830]				15.67 [398]			AISI 304	416834	2
								AISI 316L	416835	
	40.55 [1030]				19.65 [499]			AISI 304	416832	2
								AISI 316L	416833	

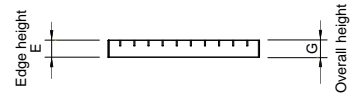
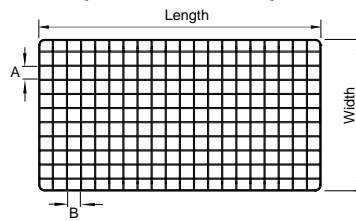
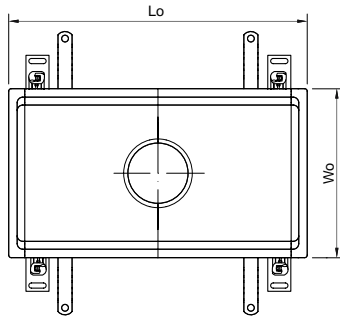
ACO Mesh Grate

Product information

- ACO Mesh Grate with slip resistant finish
- Surface - electropolished
- High flow capacity of grates
- Rounded corners
- Slip resistant

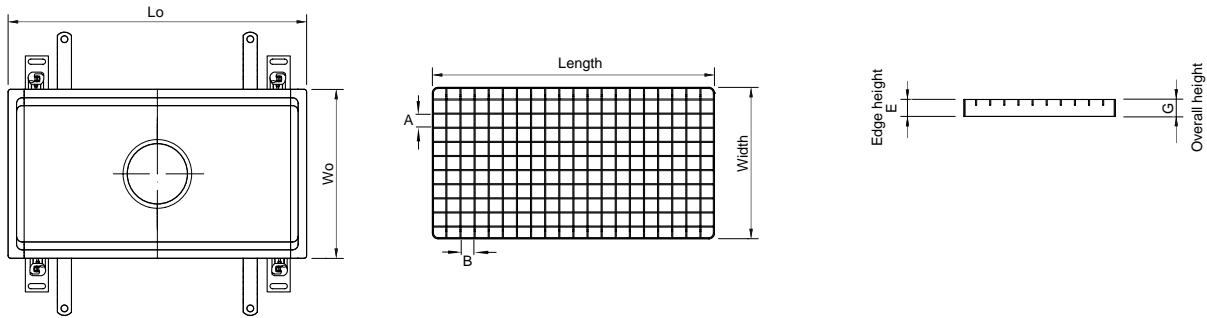


Product data - Load class: Light Duty



Channel dimension		Grate dimension					Material	Part #	# of Grates to fill channel
Wo	Lo	Edge ht	Overall ht	Width	Length	Slot size			
in [mm]	in [mm]	E in [mm]	G in [mm]	in [mm]	in [mm]	A	B		
7.87 [200]	20.87 [530]	0.79 [20]	0.79 [20]	6.61 [168]	19.65 [499]	0.91 [23]	0.08 [2]	AISI 304 416860	1
					AISI 316L 416861				
	32.68 [830]				15.67 [398]			AISI 304 416862	2
					AISI 316L 416863				
	40.55 [1030]				19.65 [499]			AISI 304 416860	2
					AISI 316L 416861				
	48.43 [1230]				15.67 [398]			AISI 304 416862	3
					AISI 316L 416863				
60.24 [1530]	19.65 [499]	AISI 304 416860	3						
	AISI 316L 416861								
79.92 [2030]	19.65 [499]	AISI 304 416860	4						
	AISI 316L 416861								

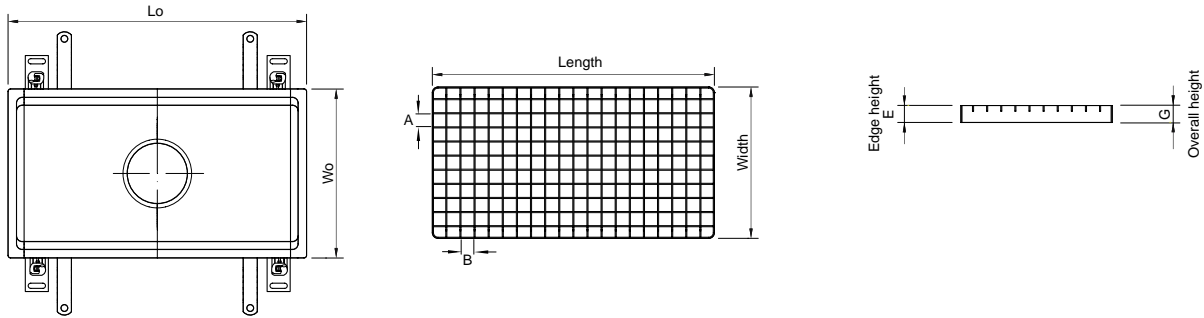
Product data - Load class: Light Duty



Channel dimension		Grate dimension					Material	Part #	# of Grates to fill channel			
Wo in [mm]	Lo in [mm]	Edge ht E in [mm]	Overall ht G in [mm]	Width in [mm]	Length in [mm]	Slot size in [mm]						
						A	B					
11.81 [300]	12.99 [330]	0.79 [20]	1.18 [30]	10.55 [268]	11.73 [298]	0.91 [23]	0.08 [2]	AISI 304	416864	1		
	AISI 316L							416865				
	AISI 304							416864	2			
	AISI 316L							416865				
	40.55 [1030]				19.65 [499]			AISI 304	416866	2		
	AISI 316L							416867				
	60.24 [1530]							119.29 [3030]	AISI 304	416866	3	
	AISI 316L								416867			
79.92 [2030]	158.66 [4030]	AISI 304	416866	4								
AISI 316L		416867										
15.74 [400]	16.93 [430]	1.18 [30]	1.18 [30]	14.49 [368]	15.67 [398]	0.91 [23]	0.08 [2]	AISI 304	416868	1		
	AISI 316L				416869							
	24.80 [630]				23.54 [598]			AISI 304	416870	1		
AISI 316L	416871											
32.68 [830]	15.67 [398]			AISI 304	416868			2				
AISI 316L	416869											
19.69 [500]	20.87 [530]			18.42 [468]	18.42 [468]			19.65 [499]	AISI 304	416872	416873	1
	AISI 316L							416873				
	32.68 [830]							15.67 [398]	AISI 304	416874	2	
AISI 316L	416875											
40.55 [1030]	19.65 [499]	AISI 304	416872	2								
AISI 316L	416873											

ACO Hygienic Floor Trough Mesh Grate

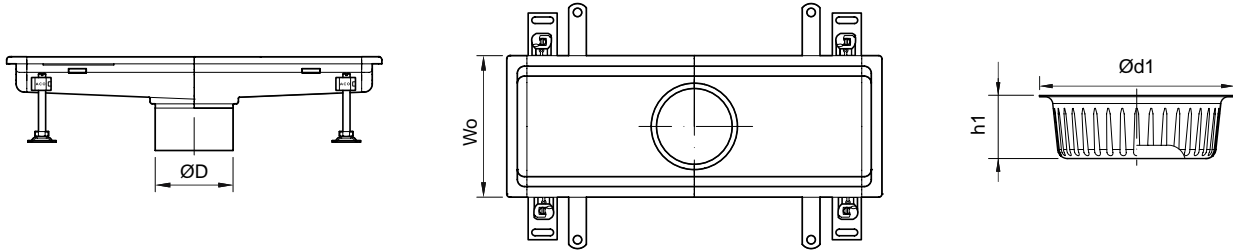
Product data - Load class: Light Duty



Channel dimension		Grate dimension					Material	Part #	# of Grates to fill channel	
Wo in [mm]	Lo in [mm]	Edge ht E in [mm]	Overall ht G in [mm]	Width in [mm]	Length in [mm]	Slot size in [mm]				
						A	B			
23.62 [600]	24.80 [630]	1.18 [30]	1.18 [30]	22.36 [568]	11.73 [298]	0.91 [23]	0.08 [2]	AISI 304	416876	2
								AISI 316L	416877	
	36.61 [930]							AISI 304	416876	3
	AISI 316L							416877		
	48.43 [1230]							AISI 304	416876	4
								AISI 316L	416877	
31.50 [800]	32.68 [830]			30.24 [768]	15.67 [398]	0.87 [22]	0.12 [3]	AISI 304	416878	2
								AISI 316L	416879	

Accessories for ACO Hygienic Floor Trough

Silt baskets



Channel dimension		Direction of floor drain outlet	Silt basket dimension		Material	Part #
Outlet size ØD in [mm]			Ød1 in [mm]	h1 in [mm]		
4.92 [125]	ACO 8" Hygienic Floor Drain	vertical, horizontal	4.92 [125]	1.77 [45]	AISI 304	414339
					AISI 316L	414340
				3.94 [25]	AISI 304	445232
					AISI 316L	445233
5.59 [142]	ACO 10" Hygienic Floor Drain	vertical, horizontal	5.59 [142]	1.97 [50]	AISI 304	408202
					AISI 316L	408212
				5.24 [133]	AISI 304	445234
					AISI 316L	445235
7.87 [200]	ACO 12" Hygienic Floor Drain	vertical, horizontal	7.87 [200]	1.97 [50]	AISI 304	408222
					AISI 316L	408232
				5.31 [135]	AISI 304	445236
					AISI 316L	445237

* Note: If FAT is to be used, please contact ACO Technical support to ensure compatibility.

ACO Custom Hygienic Floor Trough

Product information

The dimensions of the ACO custom Hygienic Floor Trough for concrete, tile and resin floors can be easily specified to meet project requirements.

- Available in AISI 304 (304) or AISI 316L (316L) grades of stainless steel
- Fully pickle passivated
- Width – up to customer request
- Length – up to customer request
- Depth – up to customer request
- Variable shape of channel – T shape, L shape
- Longitudinal slopes of the drain bottom - 1% to 5%
- Outlet position central or variable along length
- Adjustable EasyFix leveling feet
- Anchors for securing into concrete

Customization instructions

Please define drain dimensions by filling out the required entry fields.

Step 1 - Material (select one)

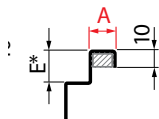
- Stainless steel grade AISI 304 Stainless steel grade AISI 316L

In addition to our standard edge profile, custom options are available as shown below.

Step 2 - Edge profiles (select one)

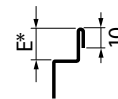


Standard

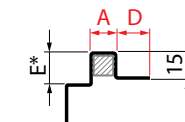


A	15	Custom
Rubber edge infill	<input type="checkbox"/>	<input type="checkbox"/>
Steel edge infill	<input type="checkbox"/>	**
No edge infill	<input type="checkbox"/>	<input type="checkbox"/>

Folded

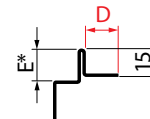


Extended



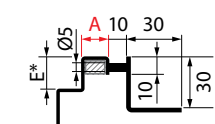
A	15	Custom
Rubber edge infill	<input type="checkbox"/>	<input type="checkbox"/>
Steel edge infill	<input type="checkbox"/>	**
No edge infill	<input type="checkbox"/>	<input type="checkbox"/>

Folded with flange



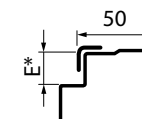
D	50	Custom
	<input type="checkbox"/>	<input type="checkbox"/>

L profile



A	15	Custom
Rubber edge infill	<input type="checkbox"/>	<input type="checkbox"/>
Steel edge infill	<input type="checkbox"/>	**
No edge infill	<input type="checkbox"/>	<input type="checkbox"/>

Vinyl clamp



* Sitting height "E" for grates is defined in step 7.
 ** For hygienic solution, check with technical support.